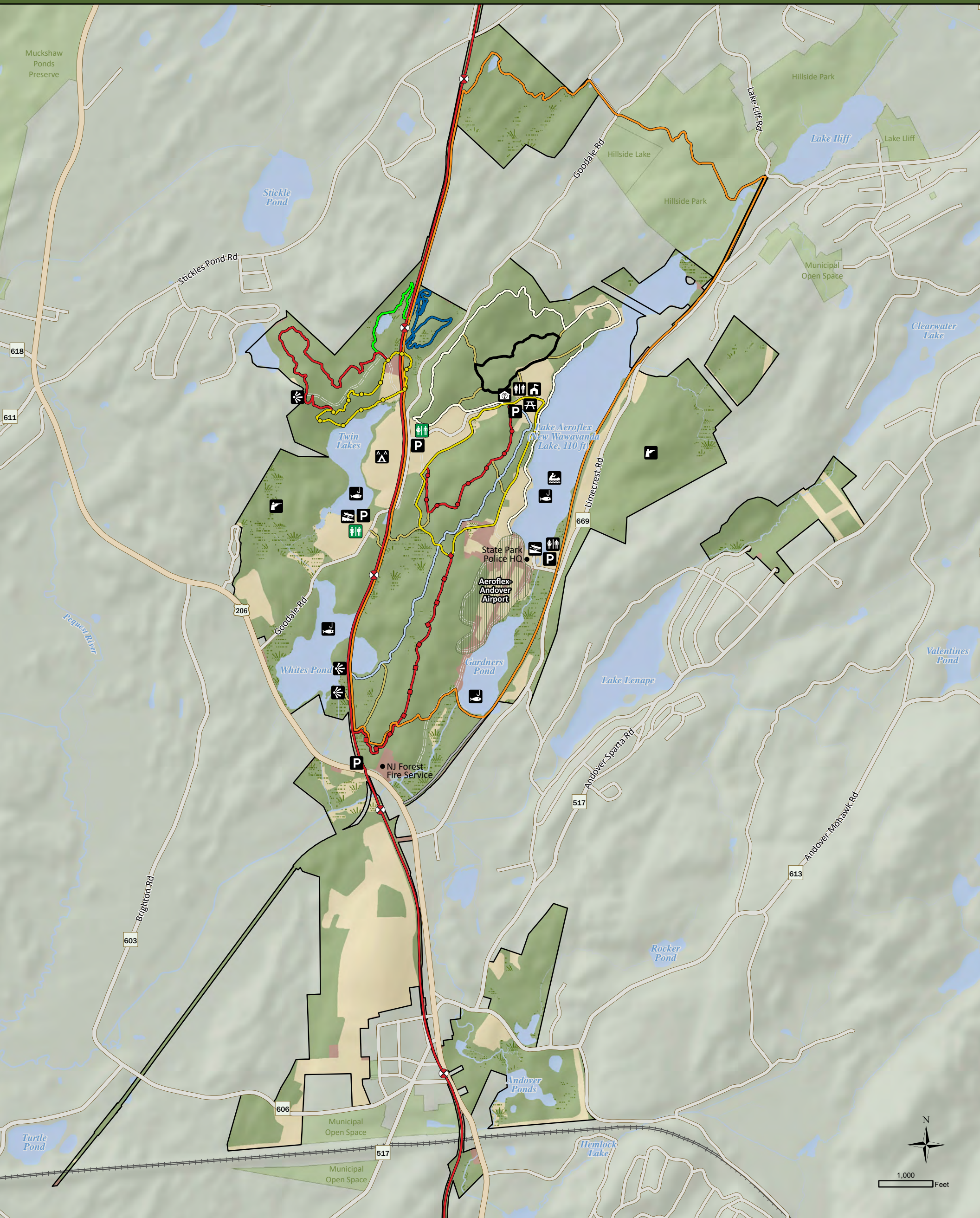


KITTATINNY VALLEY State Park



- | | | | | |
|---------------------|---------------------------------|------------------------------|---------------------|-----------------------|
| Open Field or Grass | Andover Junction Trail (1.0 mi) | Raccoon Trail (0.9 mi) | Boat Launch | Parking Lot |
| Forest | Andover Loop Trail (6.8 mi) | Shale Trail (1.0 mi) | Canoeing | Picnic Area |
| Developed Area | Explorer Trail (1.6 mi) | Sussex Branch Trail (3.0 mi) | Fishing | Restrooms |
| Water | Glacial Trail (2.6 mi) | Twin Lakes Trail (0.8 mi) | Group Campground | Restrooms (Primitive) |
| Wetland | Hemlock Trail (0.8 mi) | Vernal Trail (0.5 mi) | Hunting | Scenic View |
| Restricted Area | Limestone Trail (1.2 mi) | Trail Connector | Interpretive Center | Visitor Center |
| | Mount Nebo Trail (0.8 mi) | Rail Trail (Proposed) | | |